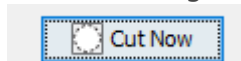


Troubleshooting Summa Plotter

Onyx Thrive CutCenter won't send files to plotter

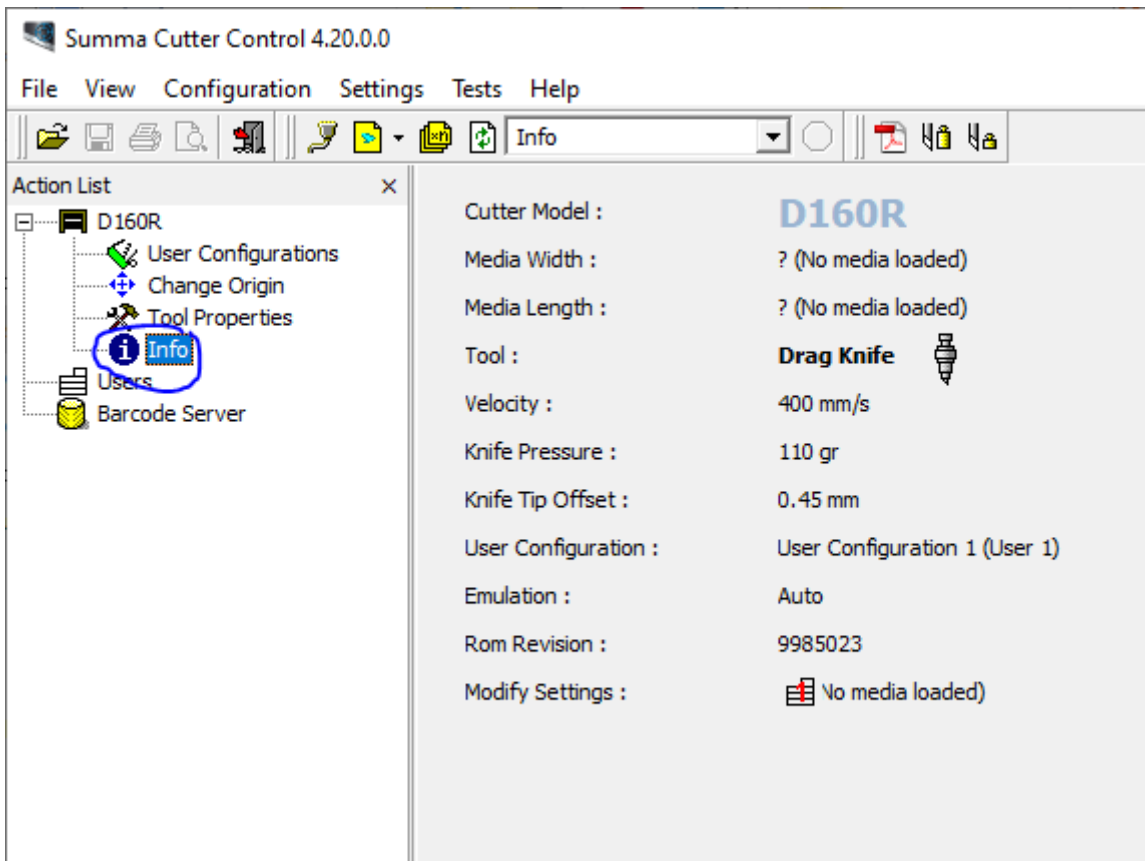
Problem

When clicking Cut Now nothing happens

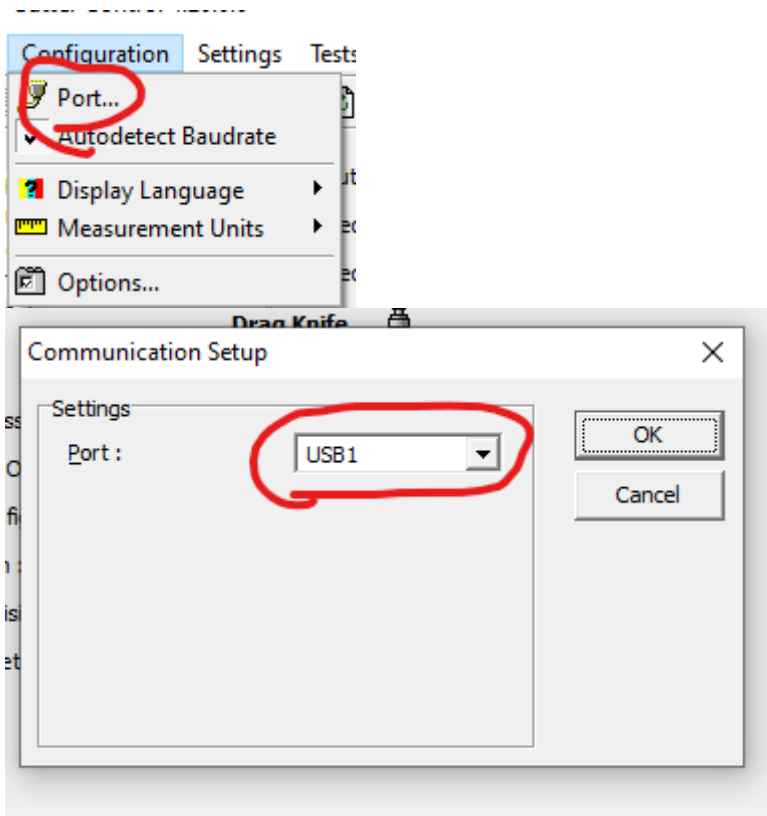


Solution

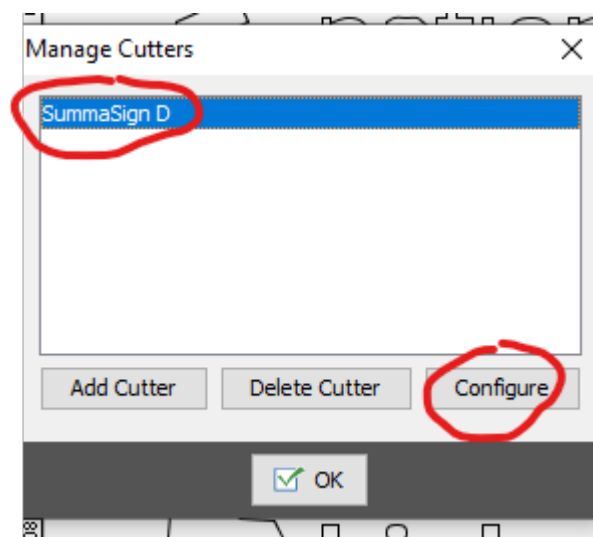
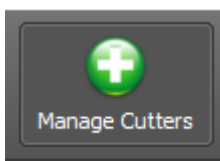
1. **Make sure plotter USB is plugged in correctly**
2. **Check that Summa Cutter Control can see and communicate with Plotter**

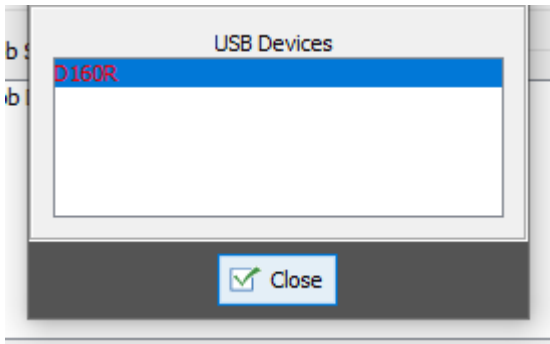


3. Check the Port that the Summa is on



4. Match the port in Onyx Thrive to the one in Summa Cutter Control





5. **MAKE SURE YOU CLOSE DOWN SUMMA PLOTTER CONTROL**

Revision #1

Created 18 May 2022 11:43:25 by Admin

Updated 18 May 2022 11:53:29 by Admin