

Summa D160

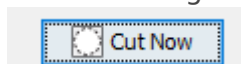
- [Troubleshooting Summa Plotter](#)

Troubleshooting Summa Plotter

Onyx Thrive CutCenter won't send files to plotter

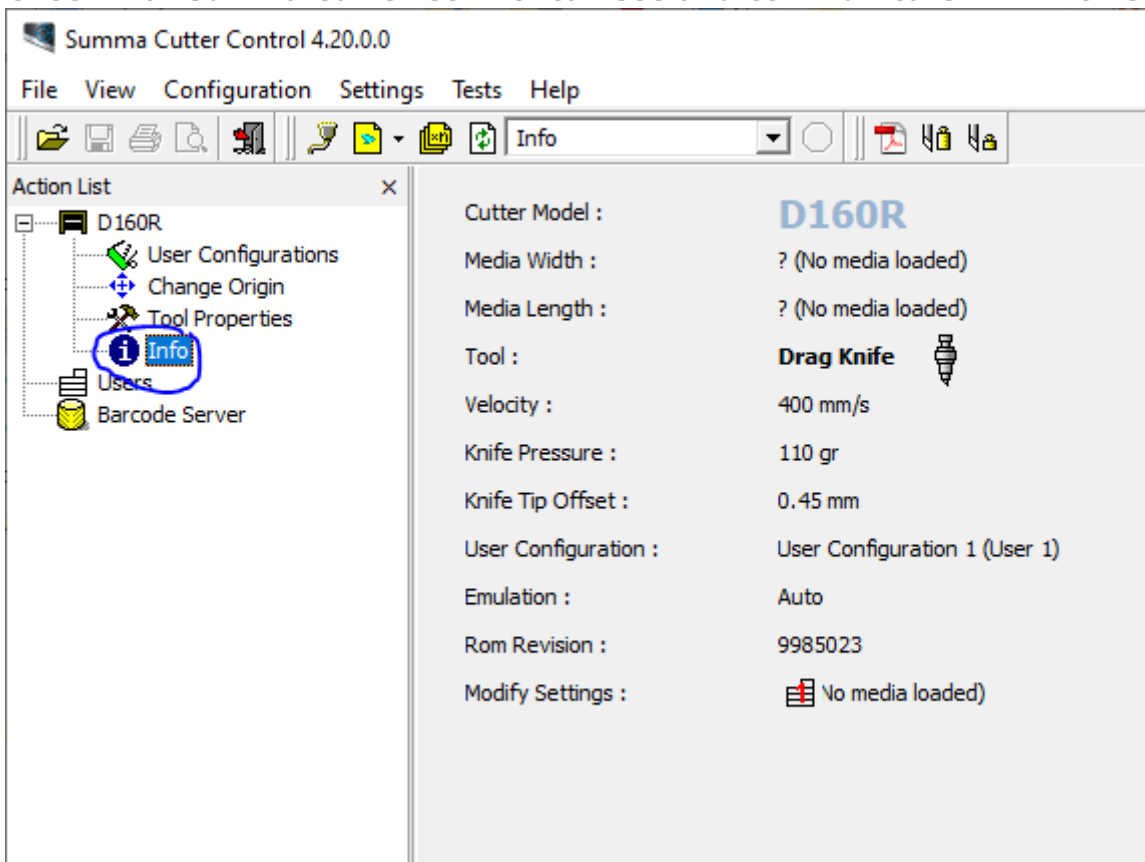
Problem

When clicking Cut Now nothing happens

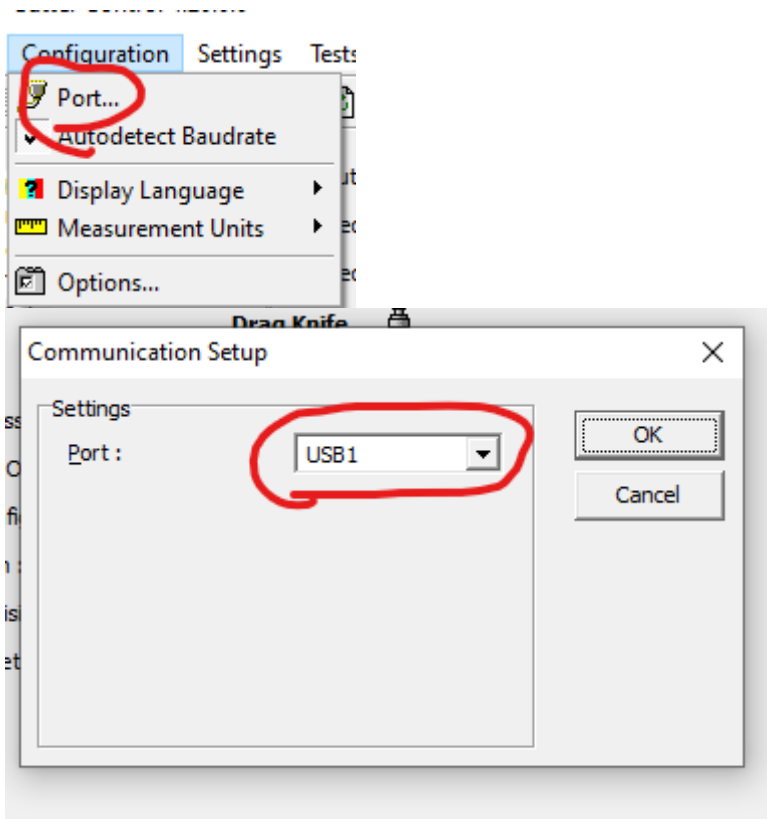


Solution

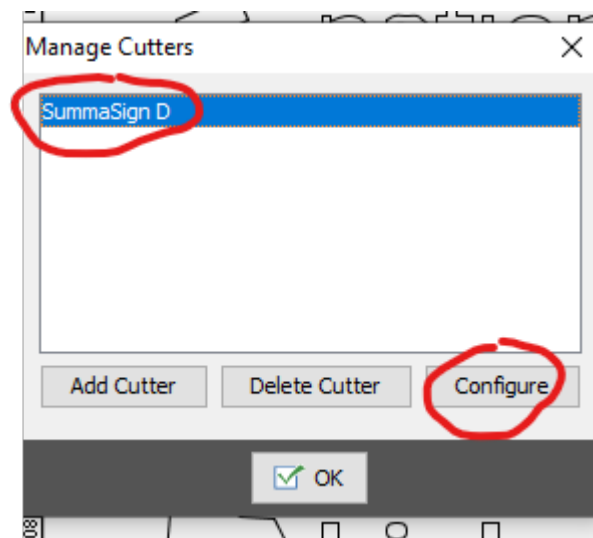
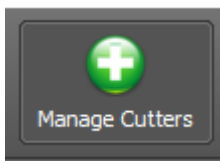
1. **Make sure plotter USB is plugged in correctly**
2. **Check that Summa Cutter Control can see and communicate with Plotter**

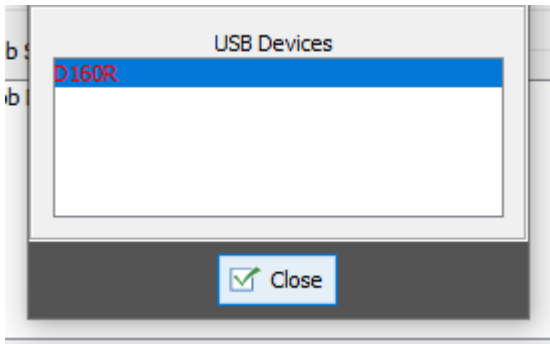


3. Check the Port that the Summa is on



4. Match the port in Onyx Thrive to the one in Summa Cutter Control





5. MAKE SURE YOU CLOSE DOWN SUMMA PLOTTER CONTROL