

# Onyx Thrive Rip

- [Opening a File & Ripping a File](#)
- [Sending a File to the Printer](#)
- [Nesting Files](#)
- [Selecting a Cutter](#)
- [Editing a File Using Preflight](#)
- [Using White Ink](#)
- [Setting Up a Preset](#)
- [Changing a Printers IP Address](#)
- [Profiling a Printer Substrate](#)
- [Deleting Files](#)
- [Sharing Zund Cut Center / Summa Cut Folder](#)
- [Zund Cut Server - Unable to Communicate with Zund Cut Server](#)



# Opening a File & Ripping a File



# Sending a File to the Printer



# Nesting Files



# Selecting a Cutter



# Editing a File Using Preflight



# Using White Ink



# Setting Up a Preset



# Changing a Printers IP Address



# Profiling a Printer Substrate



# Deleting Files

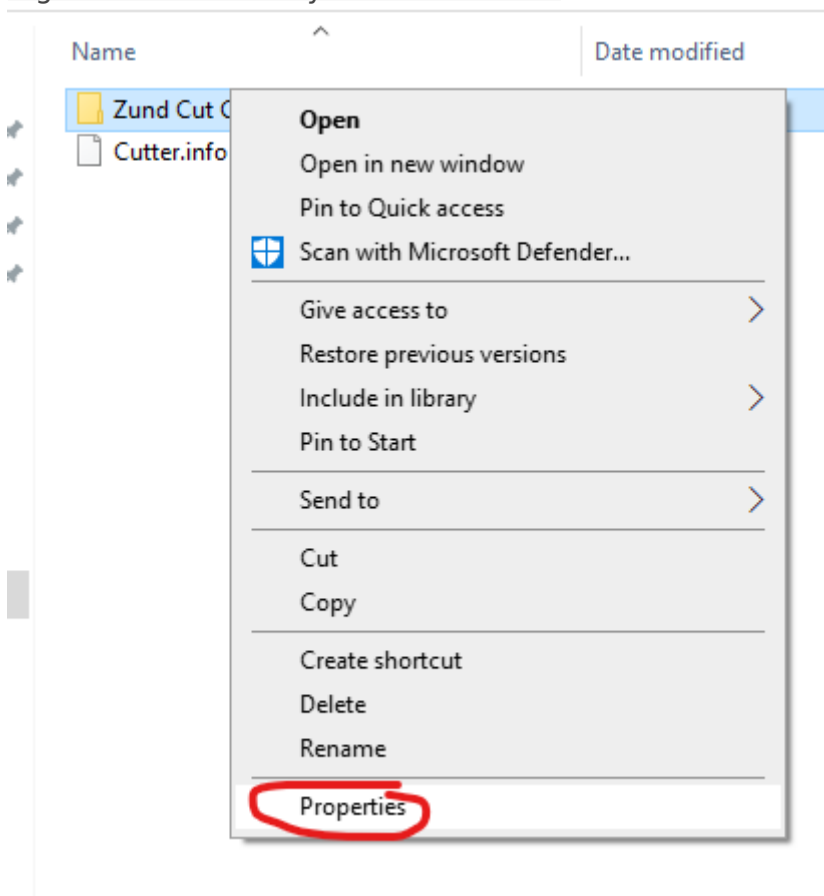


# Sharing Zund Cut Center / Summa Cut Folder

1. Navigate to the folder below on the Onyx Server you want to share the folder of

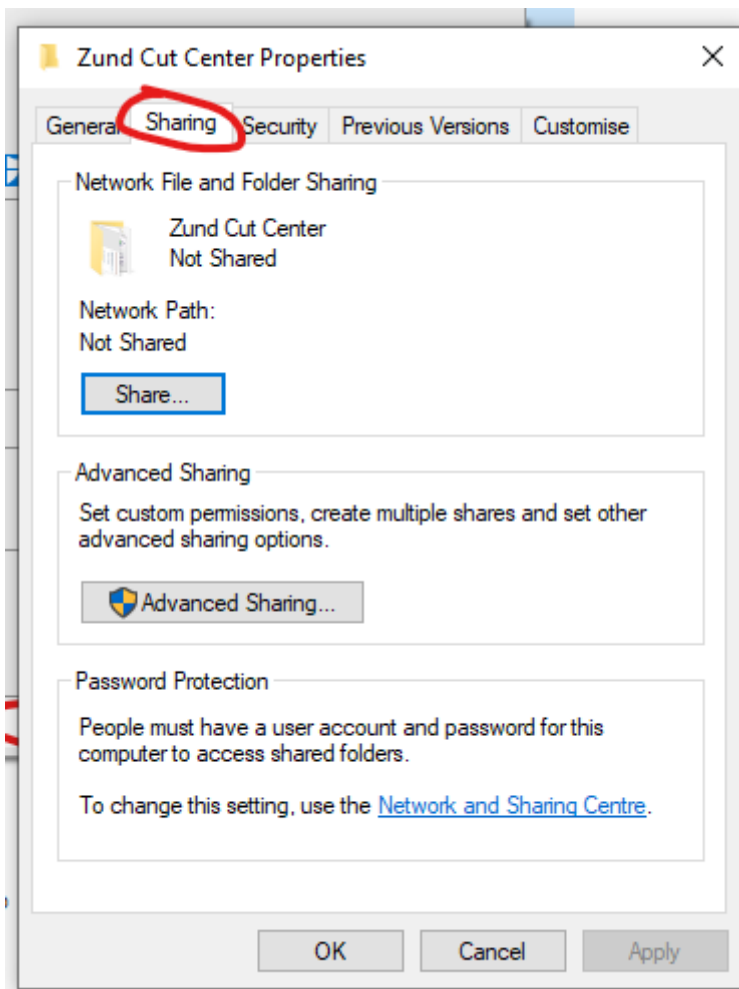
**C:\ONYXThrive21\cutter**

2. Right click the folder you want to share



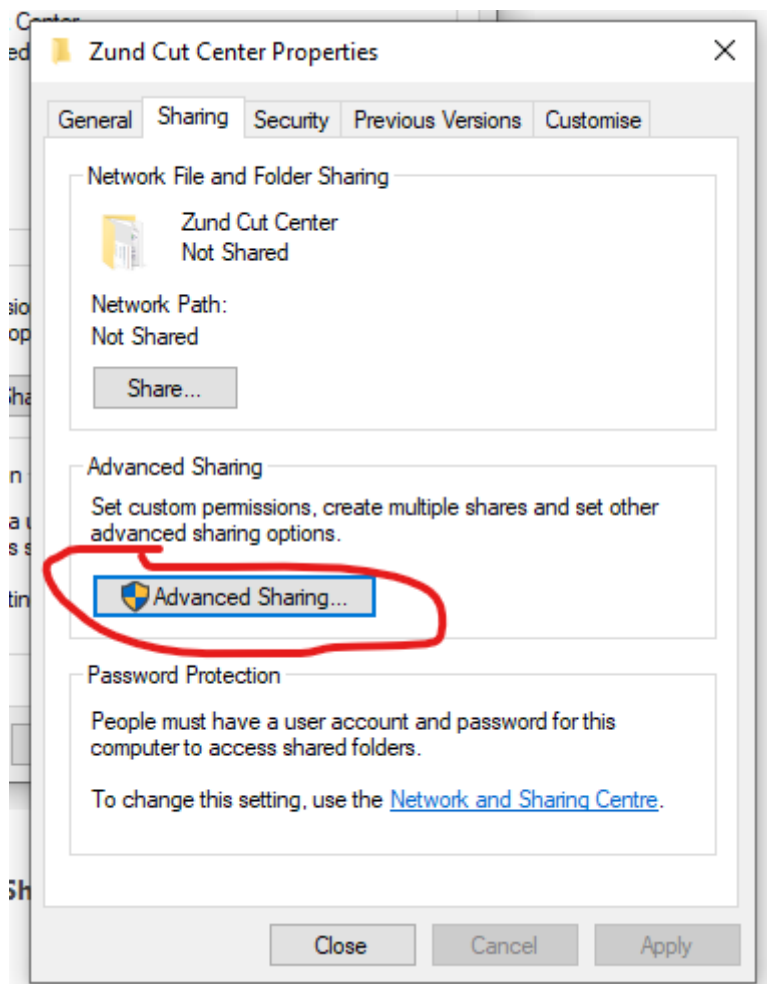
3. Select Properties
4. Go to the sharing tab



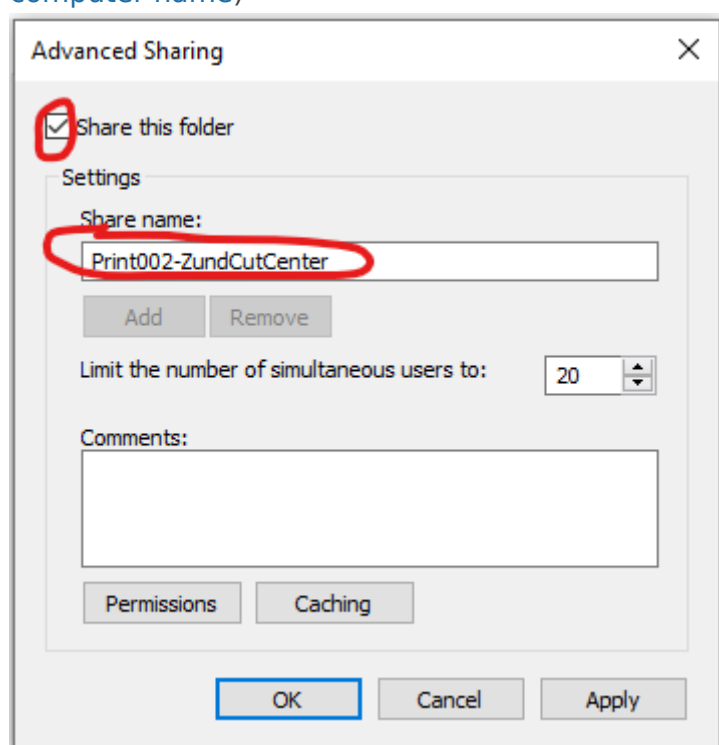


5. Click on **Advanced Sharing**



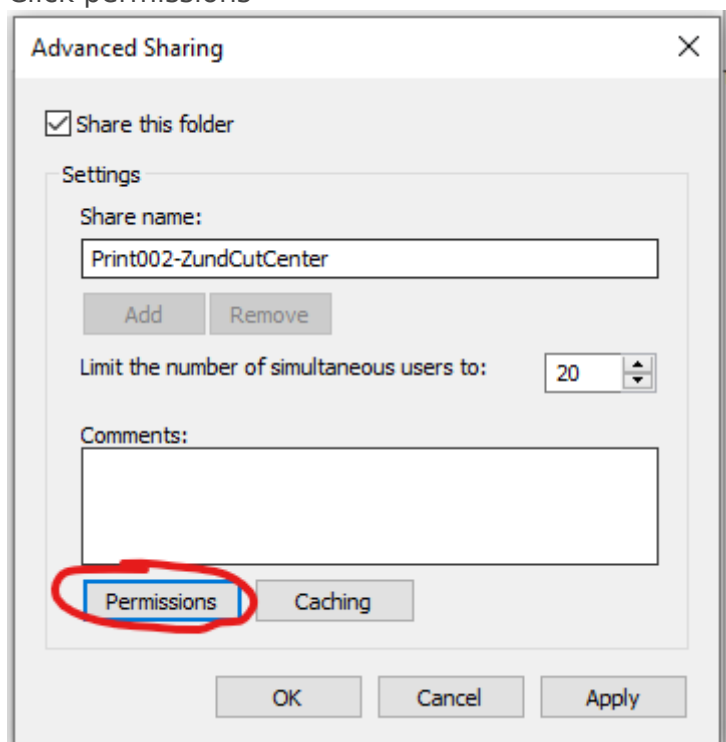


6. Check the box for share this folder then add a new share with the Computer Name followed by a dash and a folder description e.g. Print002-ZundCutCenter ([How to get the computer name](#))

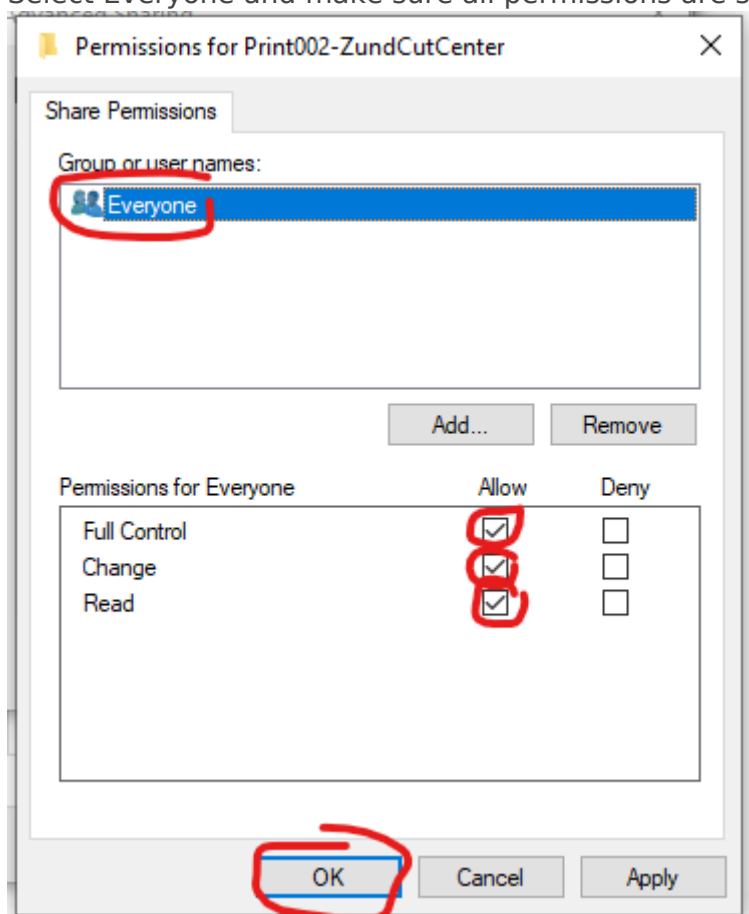




7. Click permissions

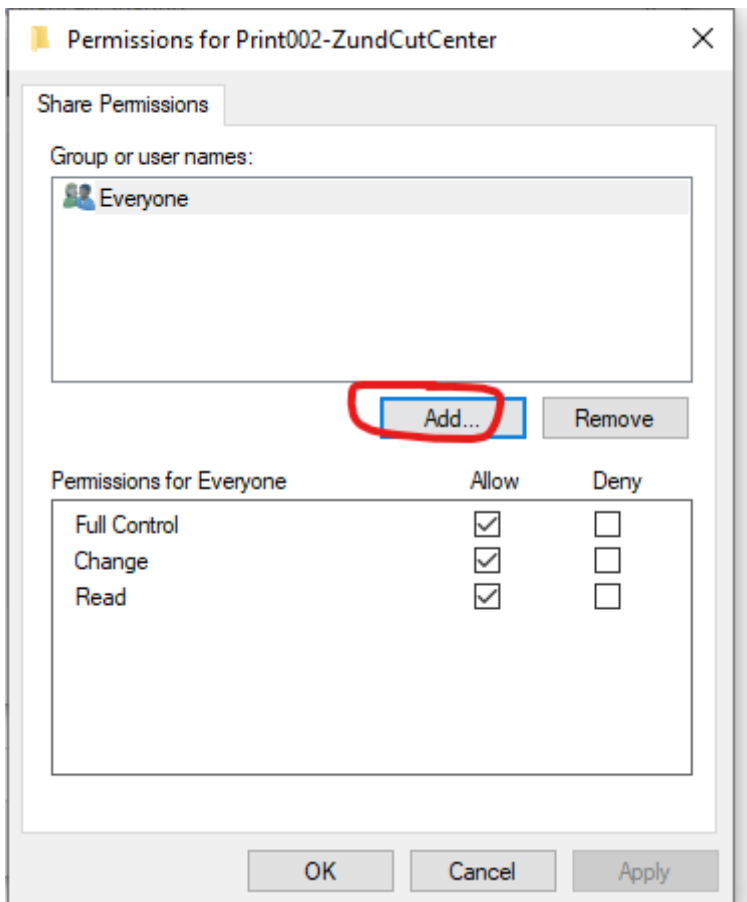


8. Select Everyone and make sure all permissions are selected

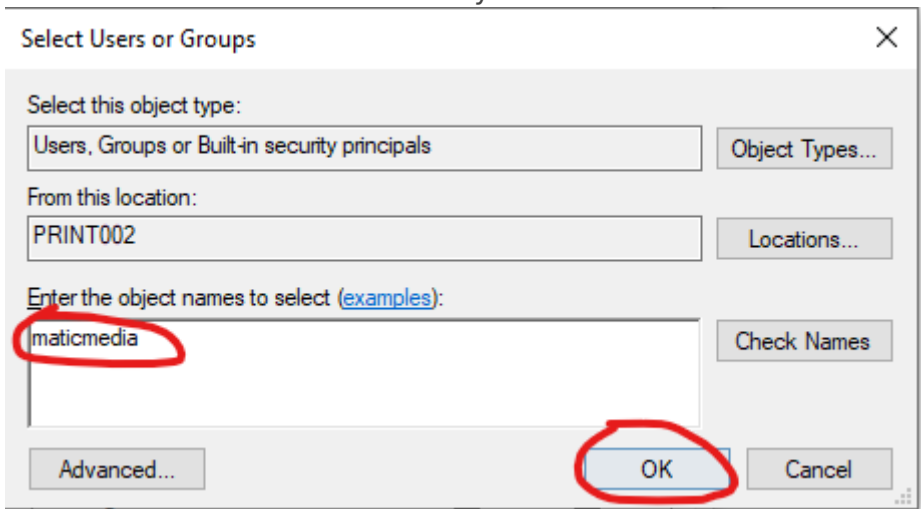


9. Click "Add"



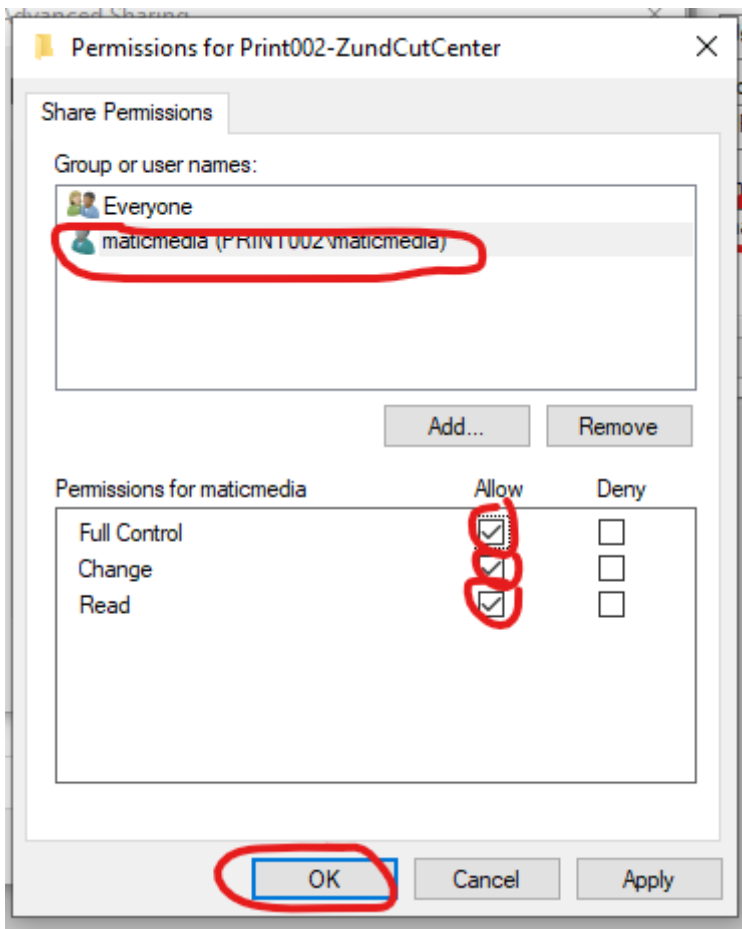


10. Enter "maticmedia" and click okay



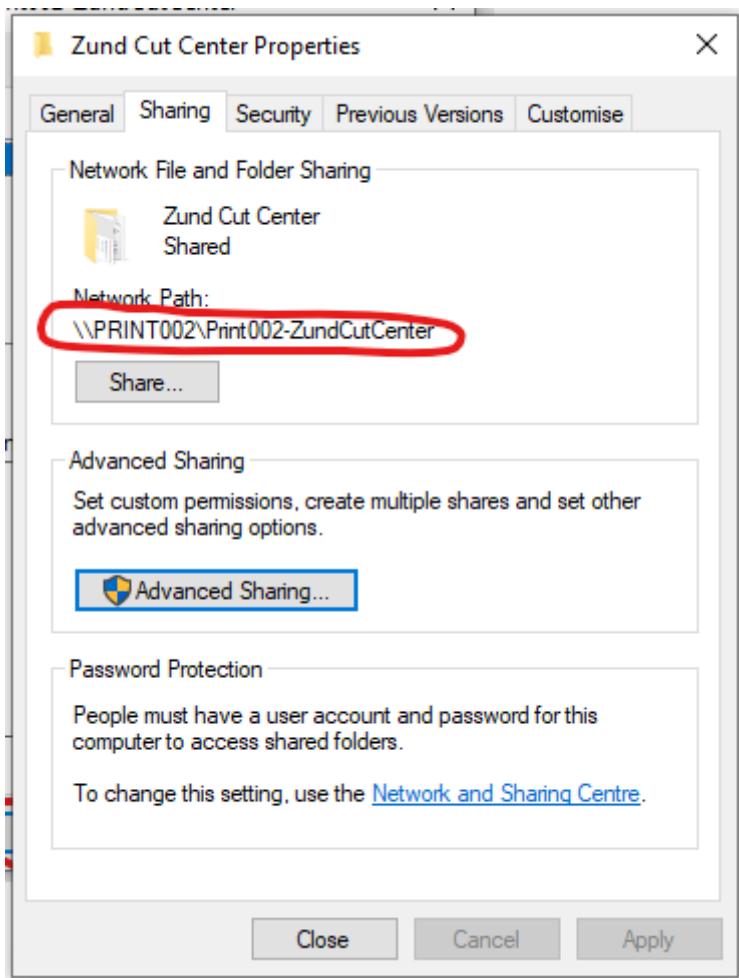
11. Add the permissions for maticmedia





12. This is the share path you need to add to the hot folder on the Zund Cut Server



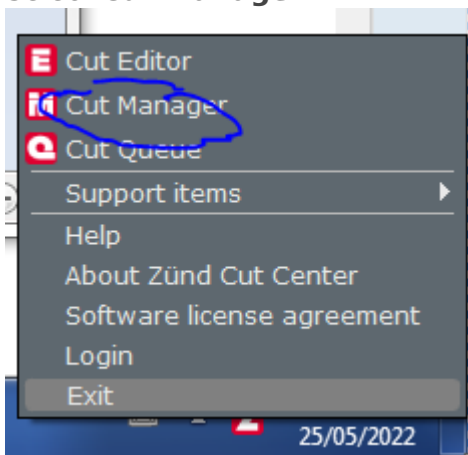


13. Go to the Zund Cut Server Computer

14. Right click the Zund Cut Manager Icon at the bottom right of the screen

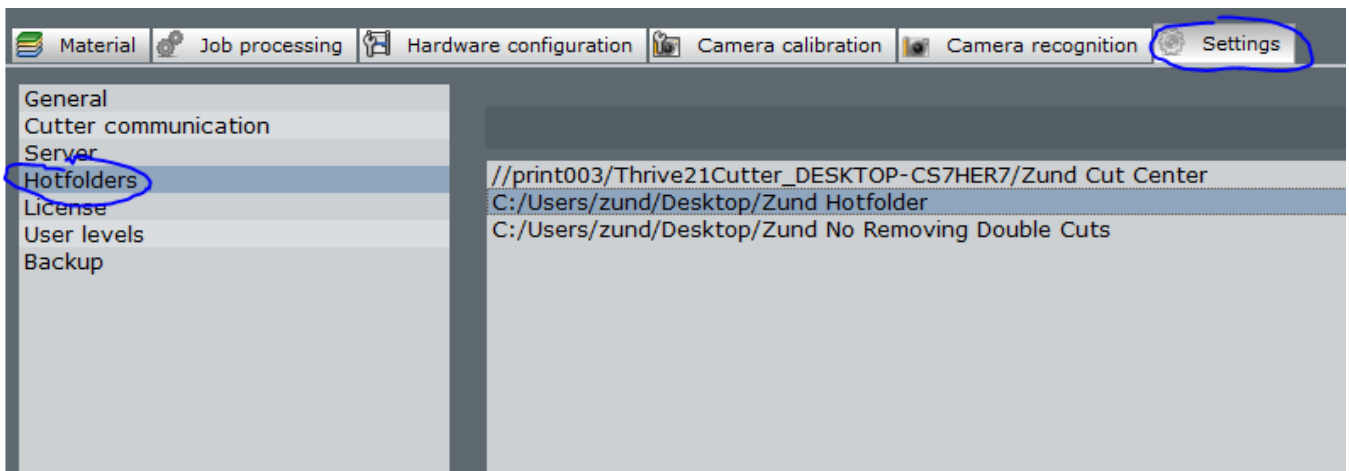


15. Select **Cut Manager**



16. In Cut Manager select **Settings Tab** and then **Hotfolders**

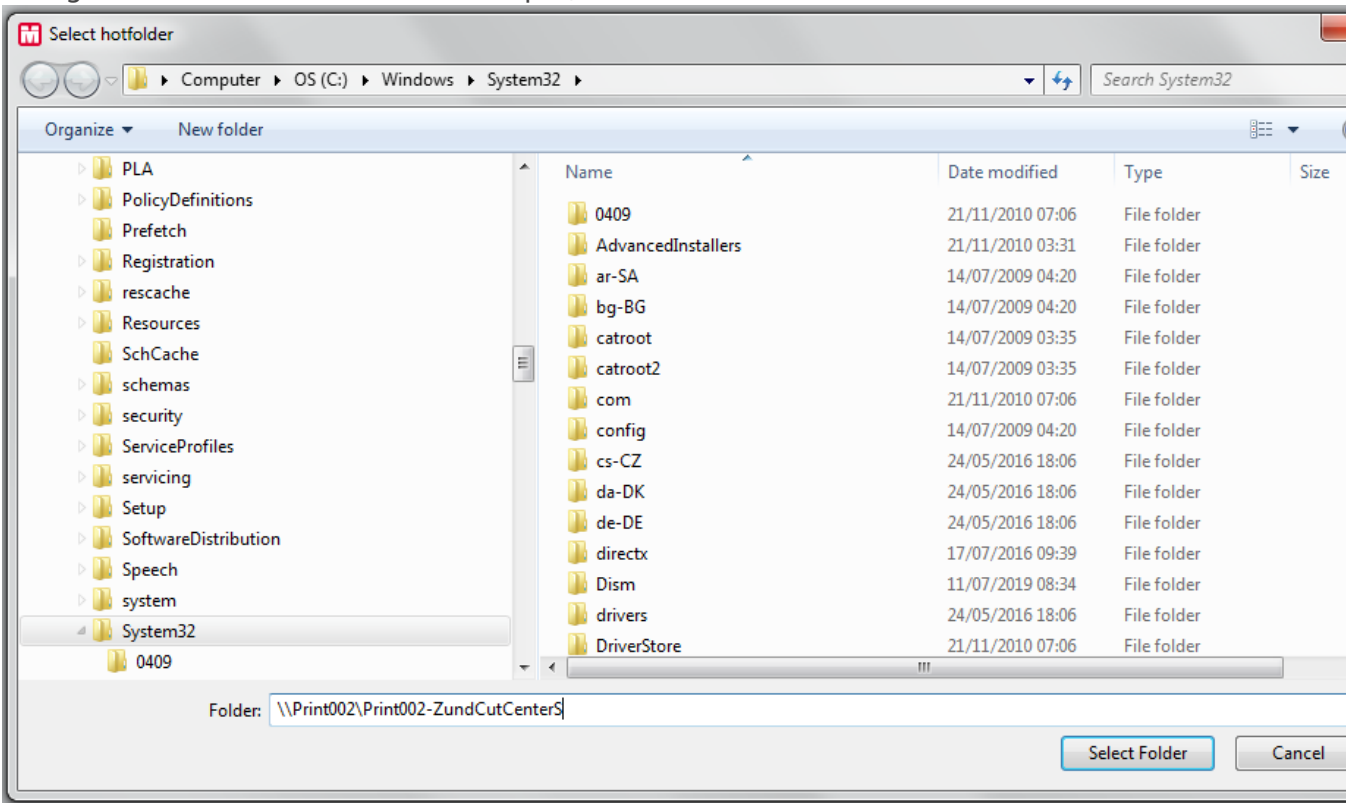




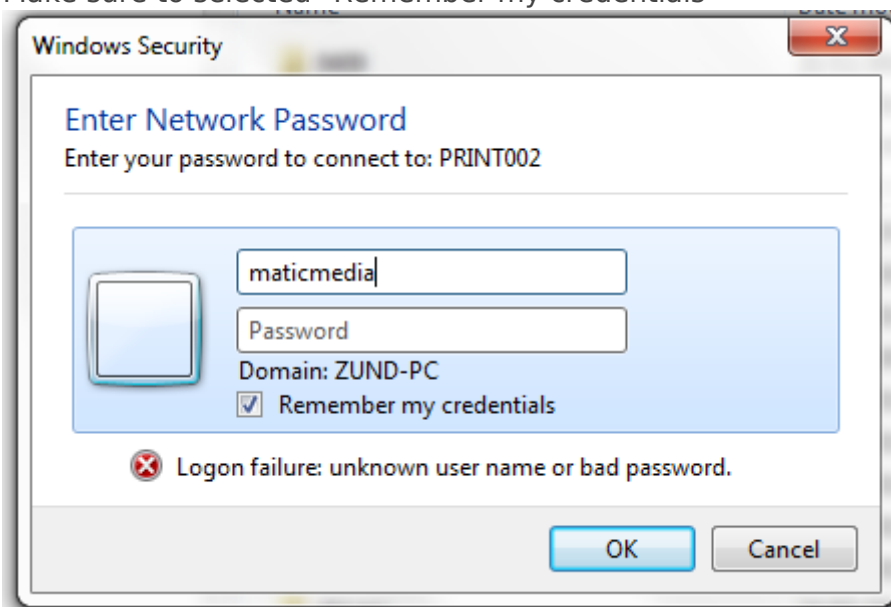
17. Click the plus symbol



18. Navigate to the share folder from step 9, in this case \\Print002\Print002-ZundCutCenter"



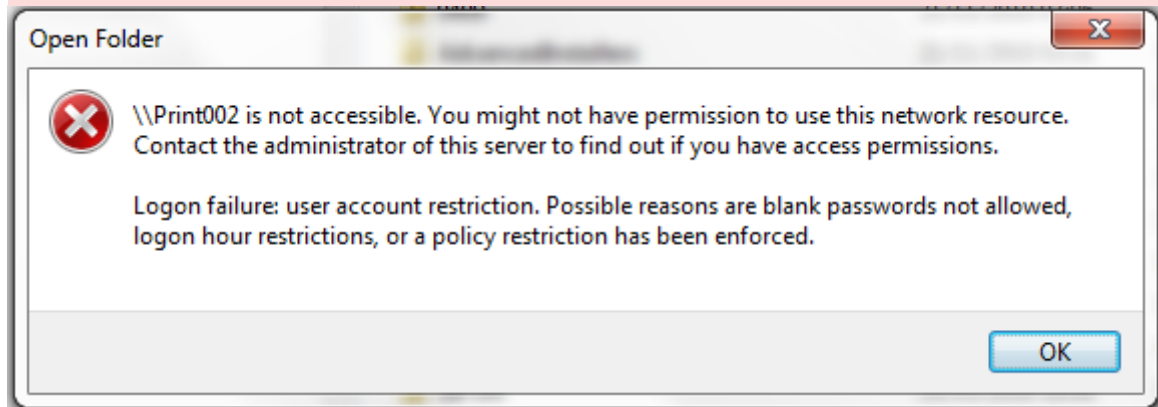
19. You may be prompted with the following, the username is maticmedia and no password. Make sure to selected "Remember my credentials"





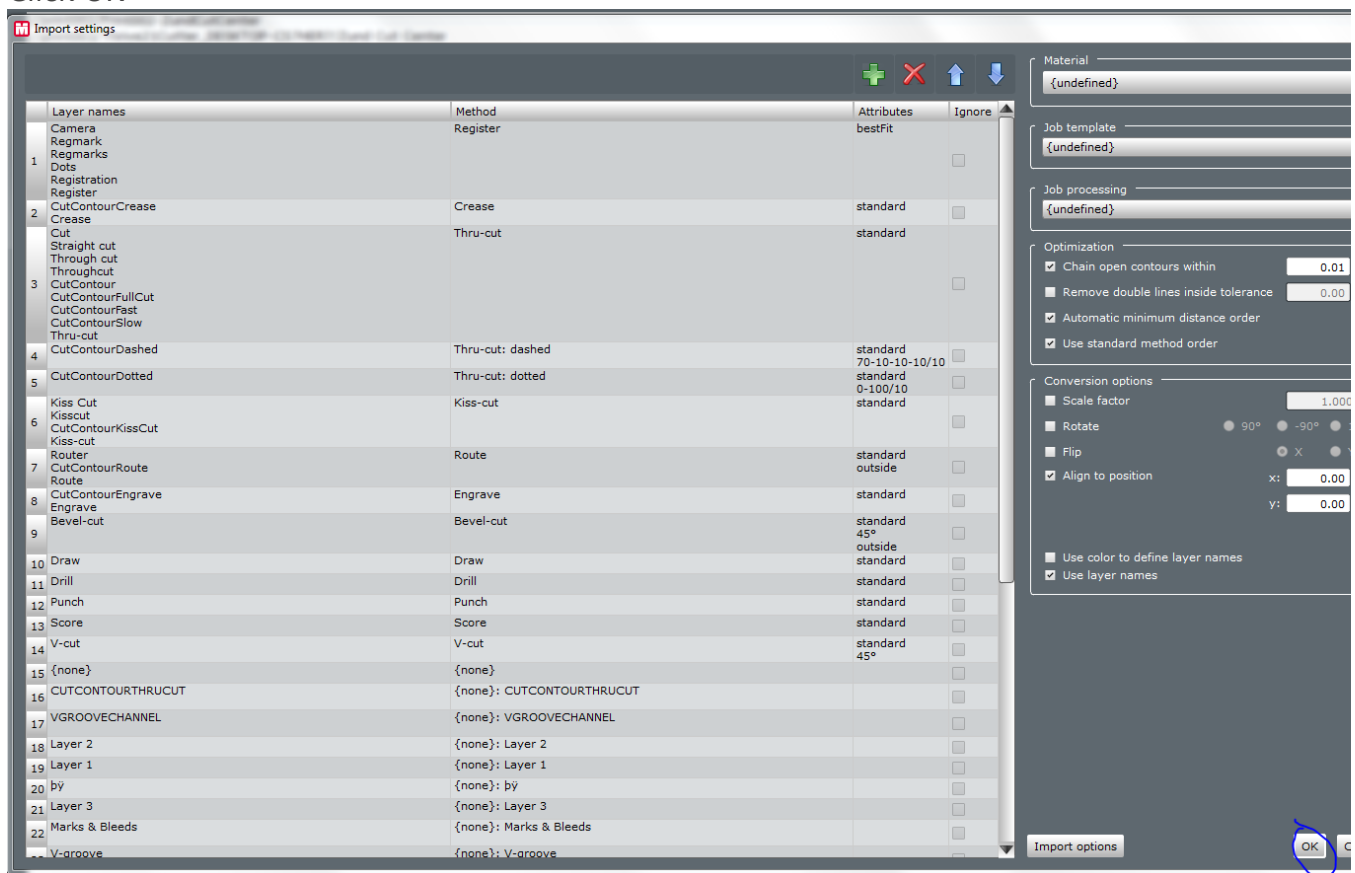
If you see this error

20. If you see this error



Go to how to fix user login error, no password

21. Click OK

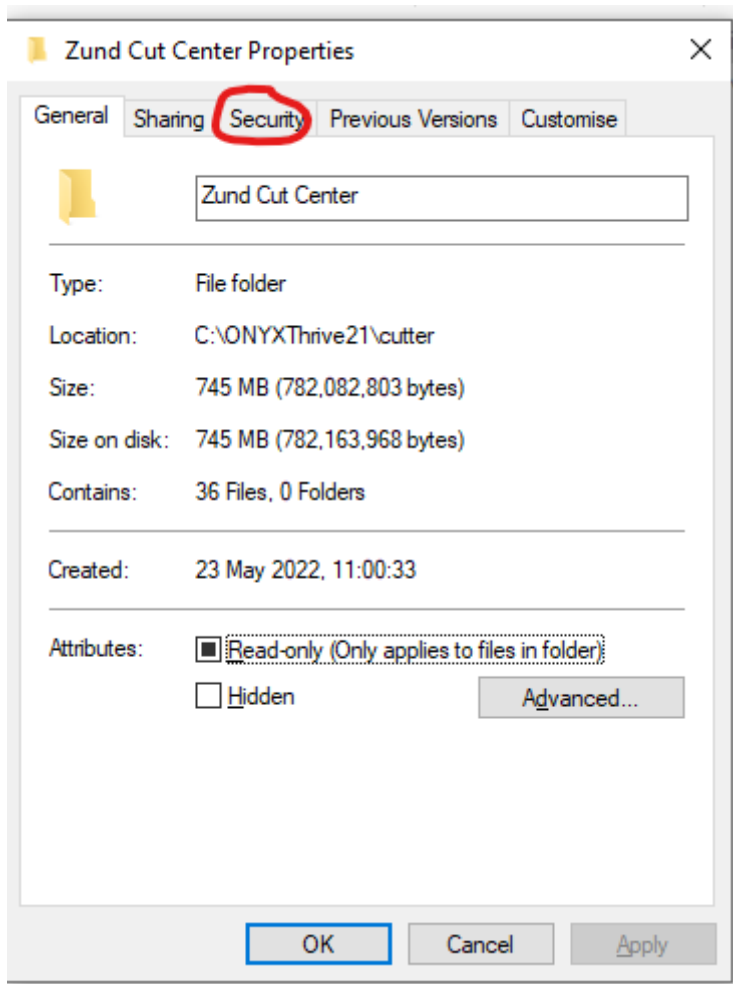


22. Restart Computer

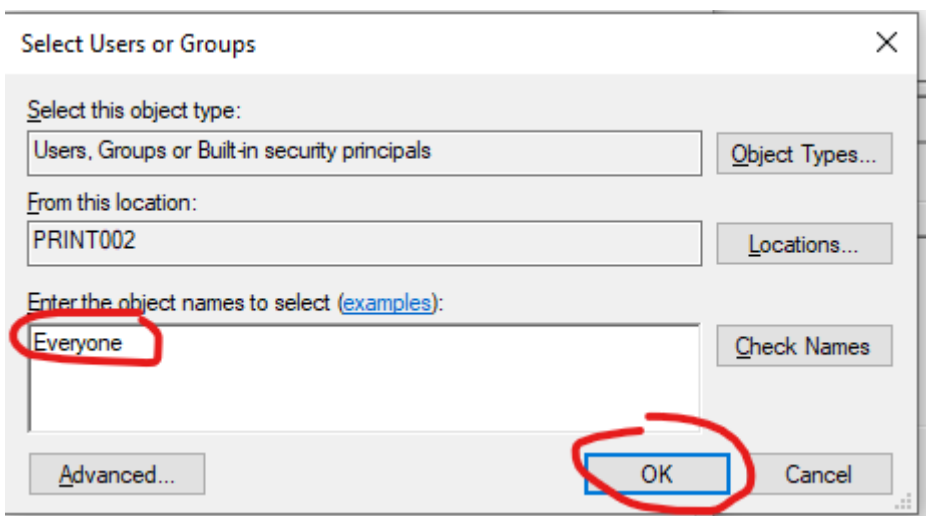
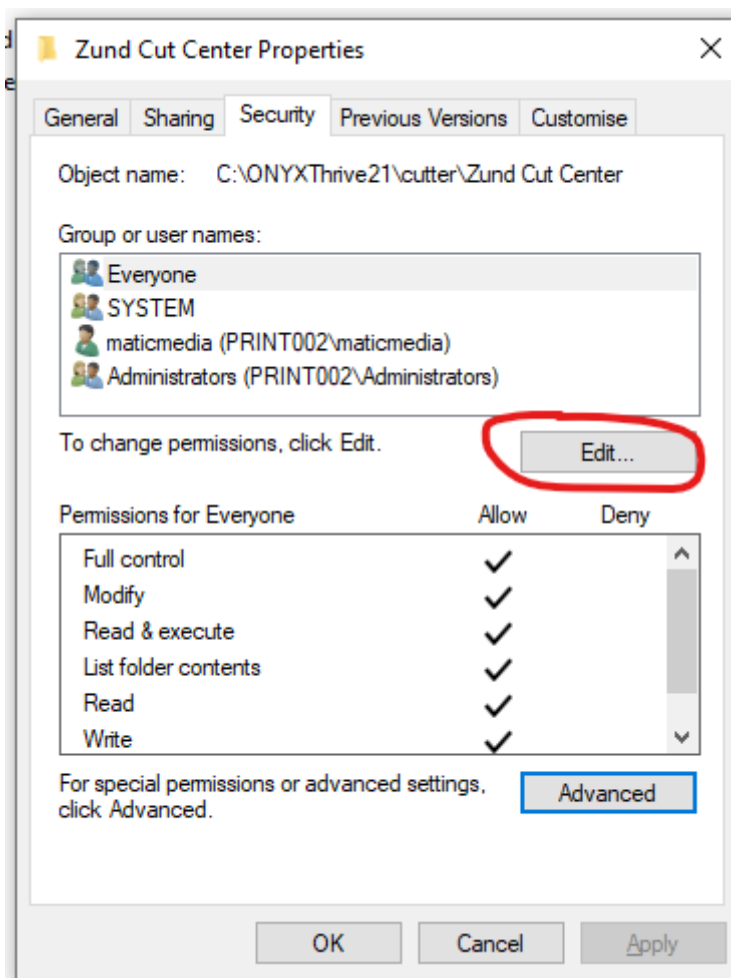
## How to fix Permissions Denied Error

When receiving the error below you have to go to the computer you are trying to access and allow security permissions for all users in the network. In the case below this would be **PRINT002**.

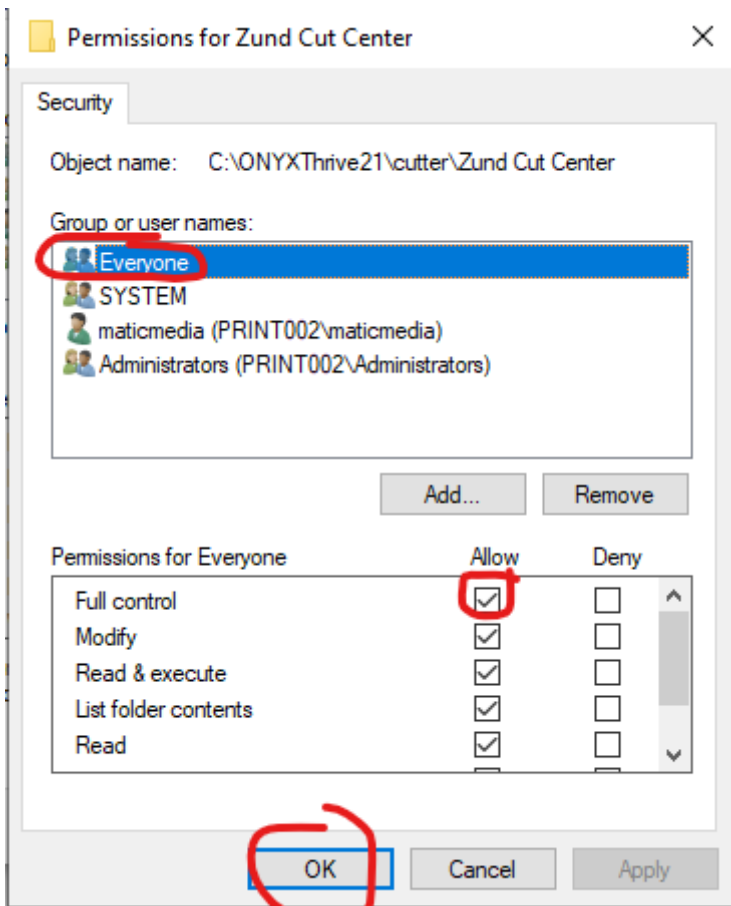






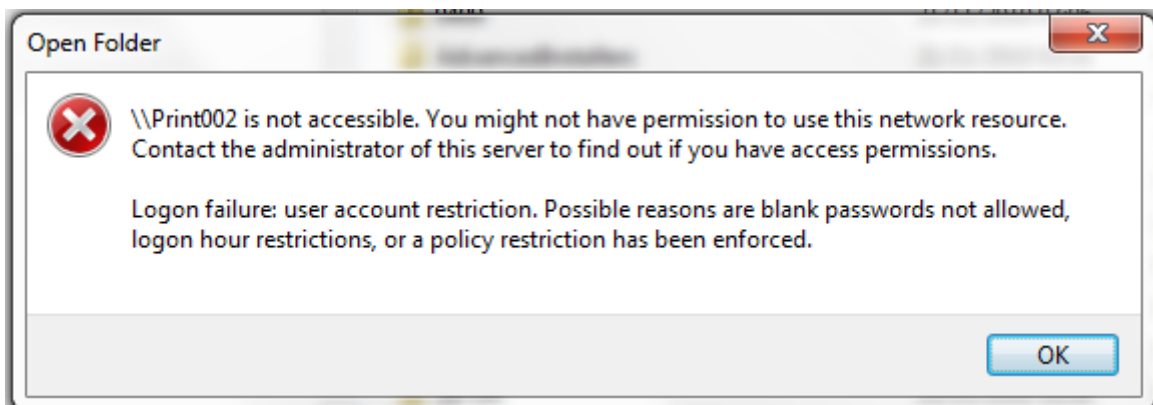






## How to fix user login error, no password

When receiving the error below you have to go to the computer you are trying to access and allow network access with no passwords. In the case below this would be **PRINT002**.

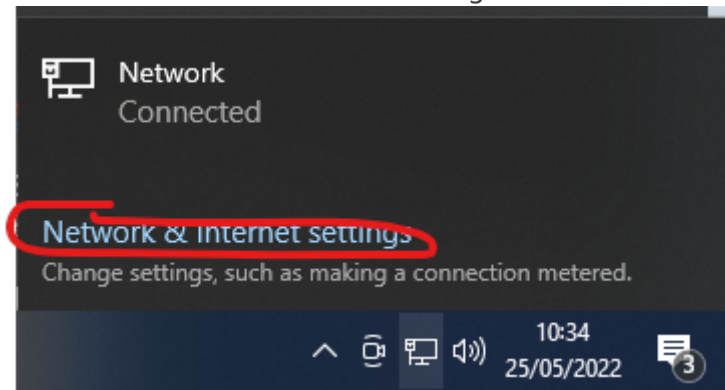


1. Click the network icon at the bottom right of the screen

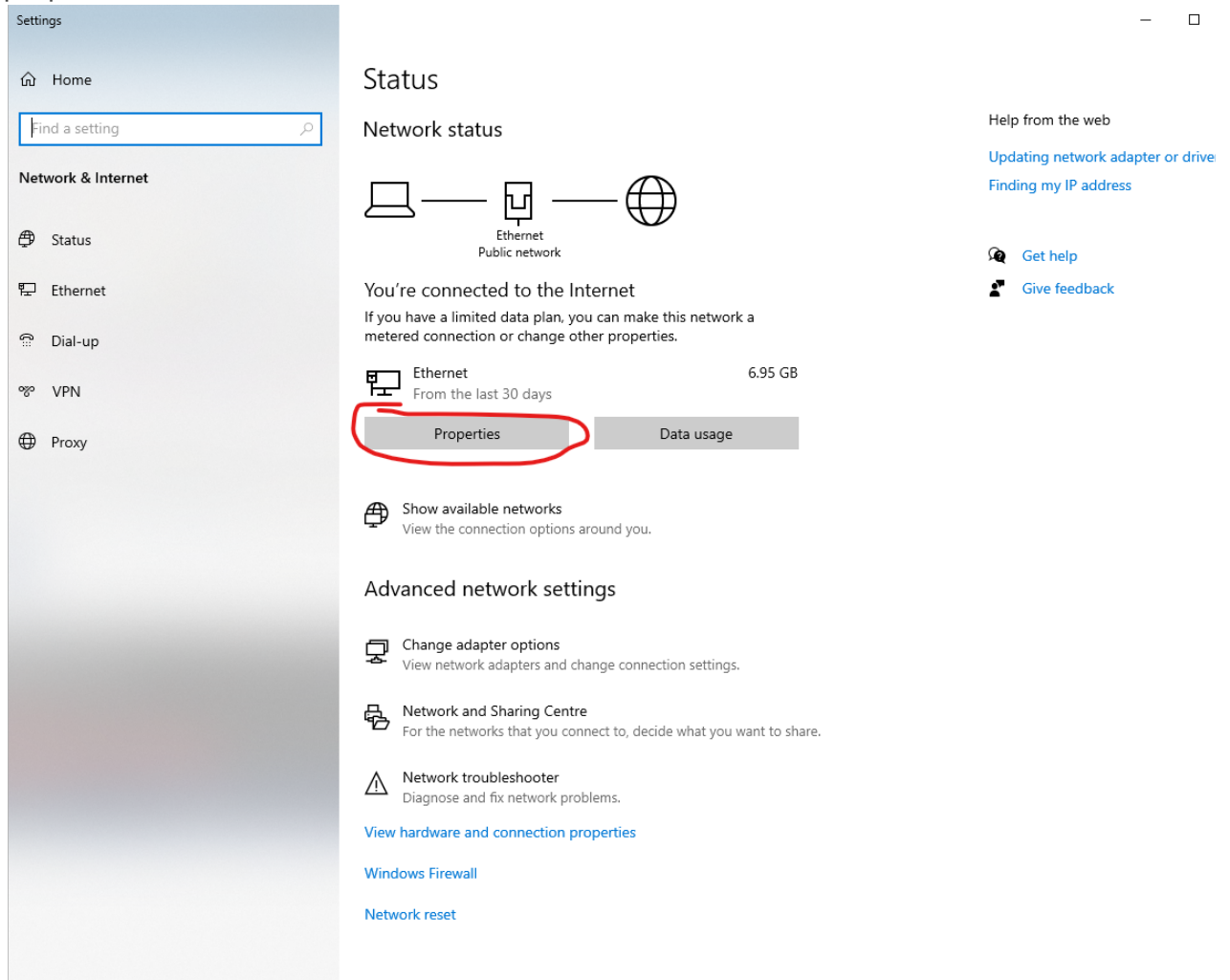




## 2. Click Network and internet settings



## 3. Click properties



## 4. Change network to private

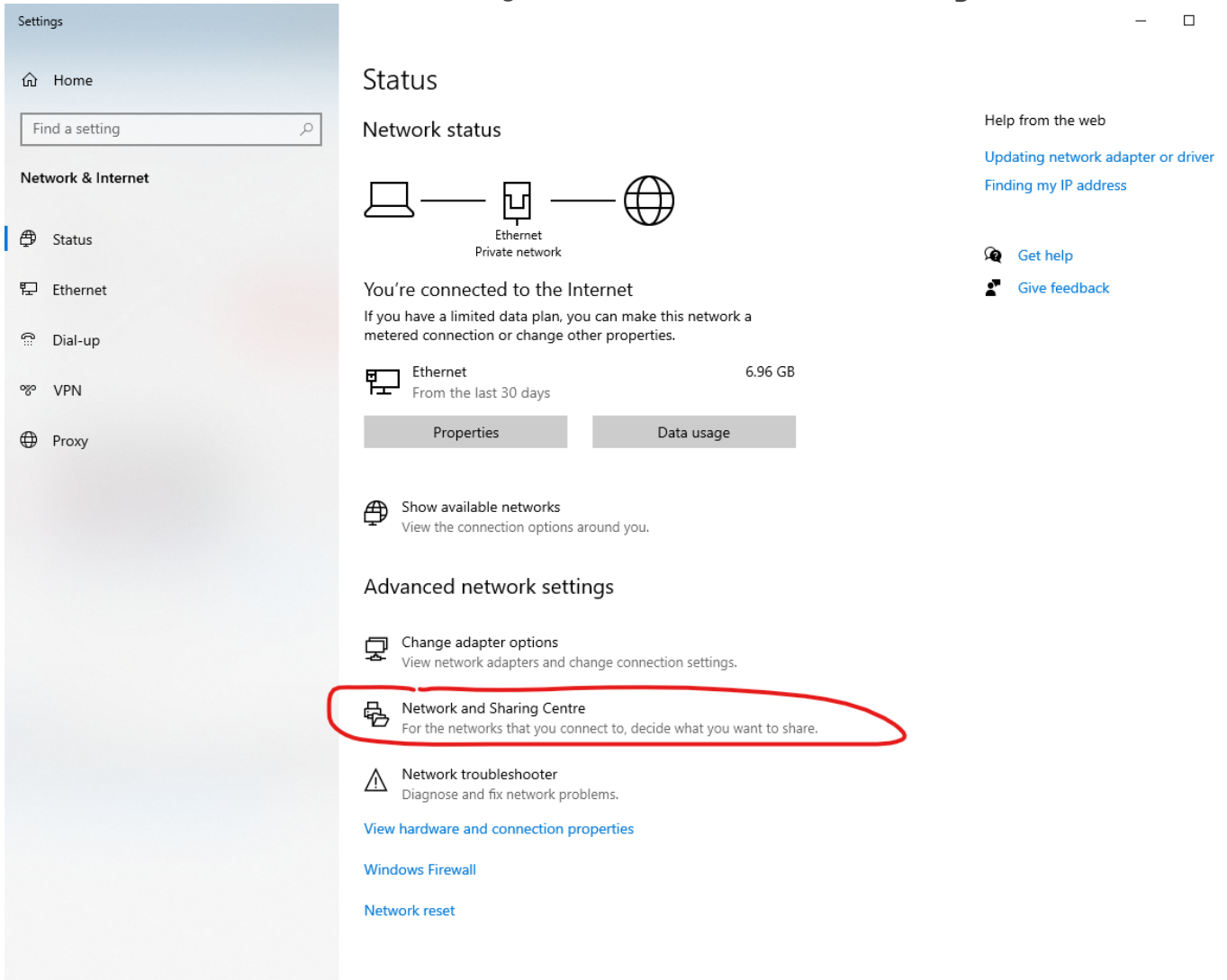
☒ Private

For a network you trust, such as at home or work. Your PC is discoverable and can be used for printer and file sharing if you set it up.

[Configure firewall and security settings](#)

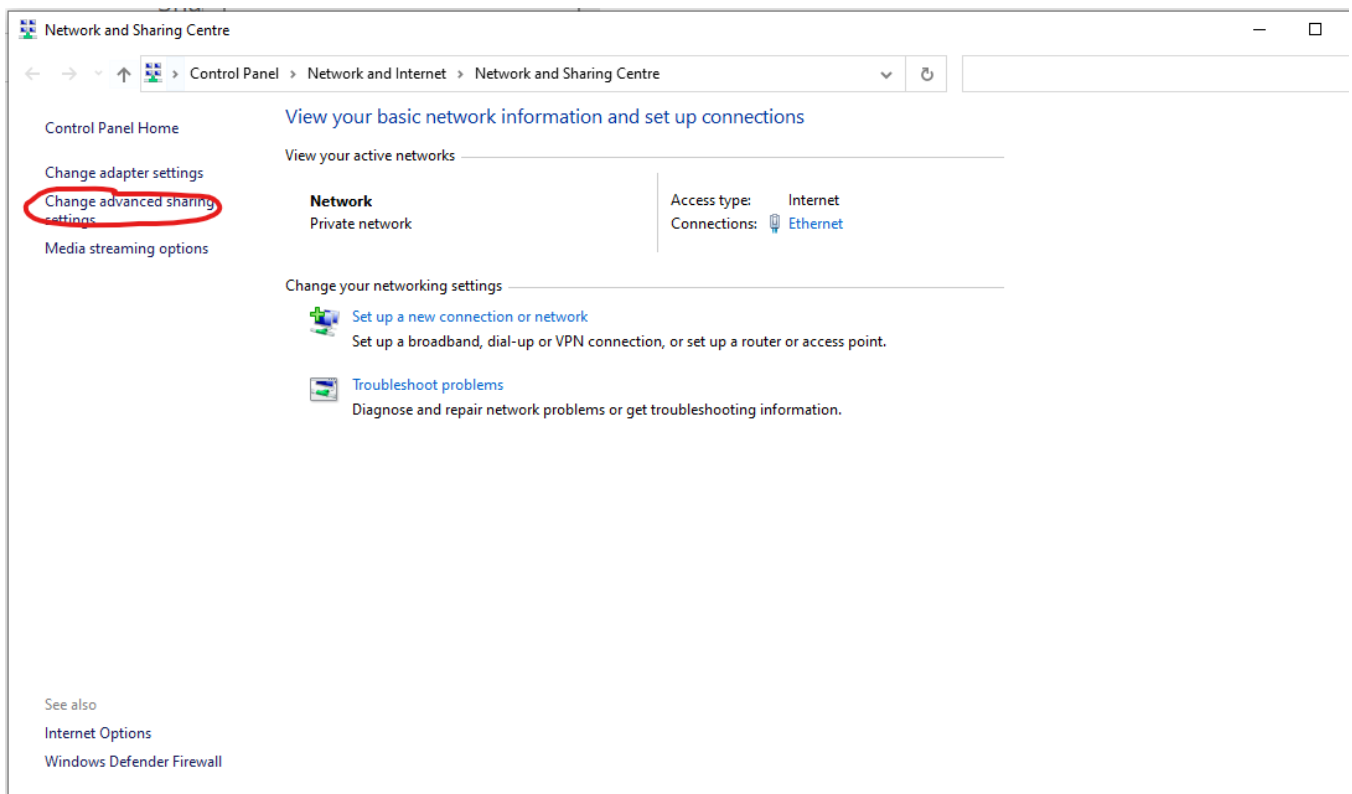


5. Go back to Network and Internet Settings and **Click Network and Sharing Center**




6. Click "**Change advanced sharing settings**"






7. Click on **Private (Current Profile)** and make sure **file and printer sharing** is selected  
[Change sharing options for different network profiles](#)


Windows creates a separate network profile for each network you use. You can choose specific options for each profile.

Private (current profile) 

Network discovery 

When network discovery is on, this computer can see other network computers and devices and is visible to other network computers.

☒ Turn on network discovery  
☒ Turn on automatic setup of network-connected devices.  
☐ Turn off network discovery

File and printer sharing 

When file and printer sharing is on, files and printers that you have shared from this computer can be accessed by people on the network.

☒ Turn on file and printer sharing  
☐ Turn off file and printer sharing

8. Click on **Private Networks** and **Check Turn Off Password-protected sharing**



## Change sharing options for different network profiles

Windows creates a separate network profile for each network you use. You can choose specific options for each profile.

Private (current profile) 

Guest or Public 

**All Networks** 

Public folder sharing 

When Public folder sharing is on, people on the network, including homegroup members, can access files in the Public folders.

- ☐ Turn on sharing so that anyone with network access can read and write files in the Public folders
- ☒ Turn off Public folder sharing (people logged on to this computer can still access these folders)

Media streaming 

When media streaming is on, people and devices on the network can access pictures, music and videos on this computer. This computer can also find media on the network.

[Choose media streaming options...](#)

File sharing connections 

Windows uses 128-bit encryption to help protect file sharing connections. Some devices don't support 128-bit encryption and must use 40- or 56-bit encryption.

- ☒ Use 128-bit encryption to help protect file sharing connections (recommended)
- ☐ Enable file sharing for devices that use 40- or 56-bit encryption

Password-protected sharing 

When password-protected sharing is on, only people who have a user account and password on this computer can access shared files, printers attached to this computer and the Public folders. To give other people access, you must turn off password-protected sharing.

- ☐ Turn on password-protected sharing
- ☒ Turn off password-protected sharing



# Zund Cut Server - Unable to Communicate with Zund Cut Server

If you see the below error. Turn off Zund Cut Server Direct in Cutter Settings

[image-1696587973079.png](#)

Image not found or type unknown

[image-1696588018593.png](#)

Image not found or type unknown

[image-1696588039547.png](#)

Image not found or type unknown

[image-1696588074224.png](#)

Image not found or type unknown

[image-1696588129041.png](#)

Image not found or type unknown