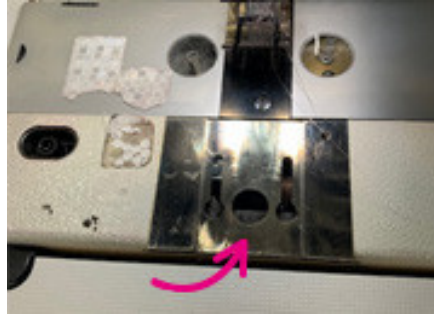


Sewing a Standard Hem (Double Fold)



1. Use the 10mm hemming guide above.



2. Insert the screw at the back of the guide into the hole and slide upwards



3. Once it's in place you're now ready to start sewing.



4. Insert the material going from left to right into the hem guide. Push the material until it starts to curl around the guide.



5. Continue to curl the material as it goes through; this will help to make the hem.

Revision #10

Created 6 May 2022 07:38:59 by Admin

Updated 10 November 2022 12:38:32 by Lesley