

Sewing a Feather Flag - Standard finish

Our standard finish is unhemmed leaving just the raw edges - Intended for short use only

When the flag pole is inserted and fitted to the base... it should look like the image below.



You will require

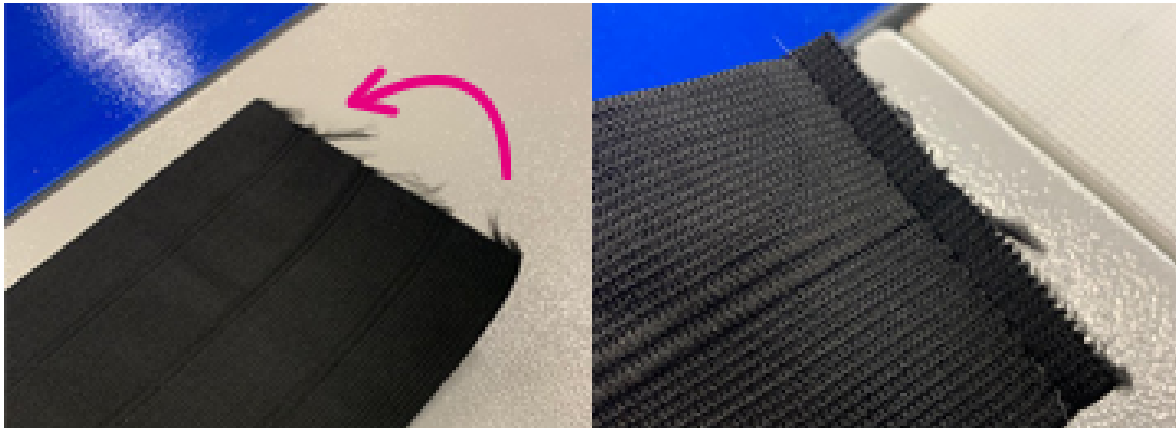
Black 60s thread for the machine head

Monofilament thread for the bobbin

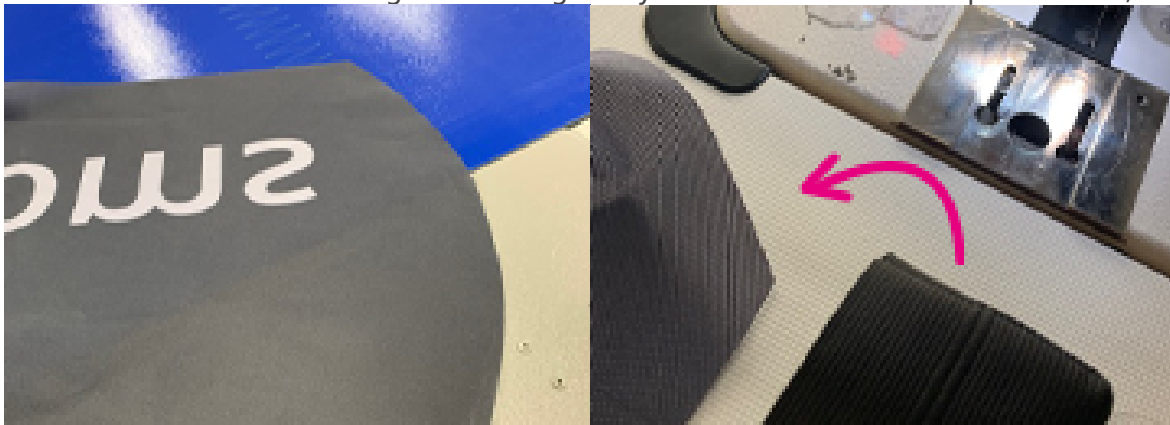
The printed flag

Elastic flag belt

Elastic bungee cord



Fold 130mm elastic banding in half lengthways. Stitch across the top to secure, then turn inside.

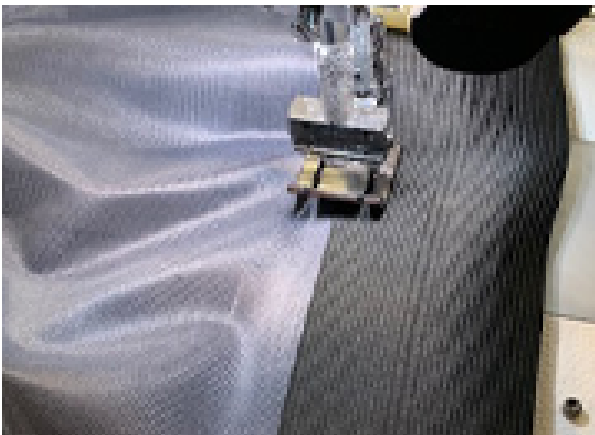


Lay the flag flat out - wrong side facing up.

Flag and banding can now be put together.



Place flag material inside the banding and stitch from top to bottom following the curve of the flag.



Keep the edge of the banding in the middle of the foot and sew down to the bottom of the flag.



Stitch a loop of elastic bungee cord to the bottom of the flag. This will help secure the flag to the pole.

Revision #7

Created 9 November 2022 09:42:10 by Lesley

Updated 25 July 2023 14:46:10 by Lesley