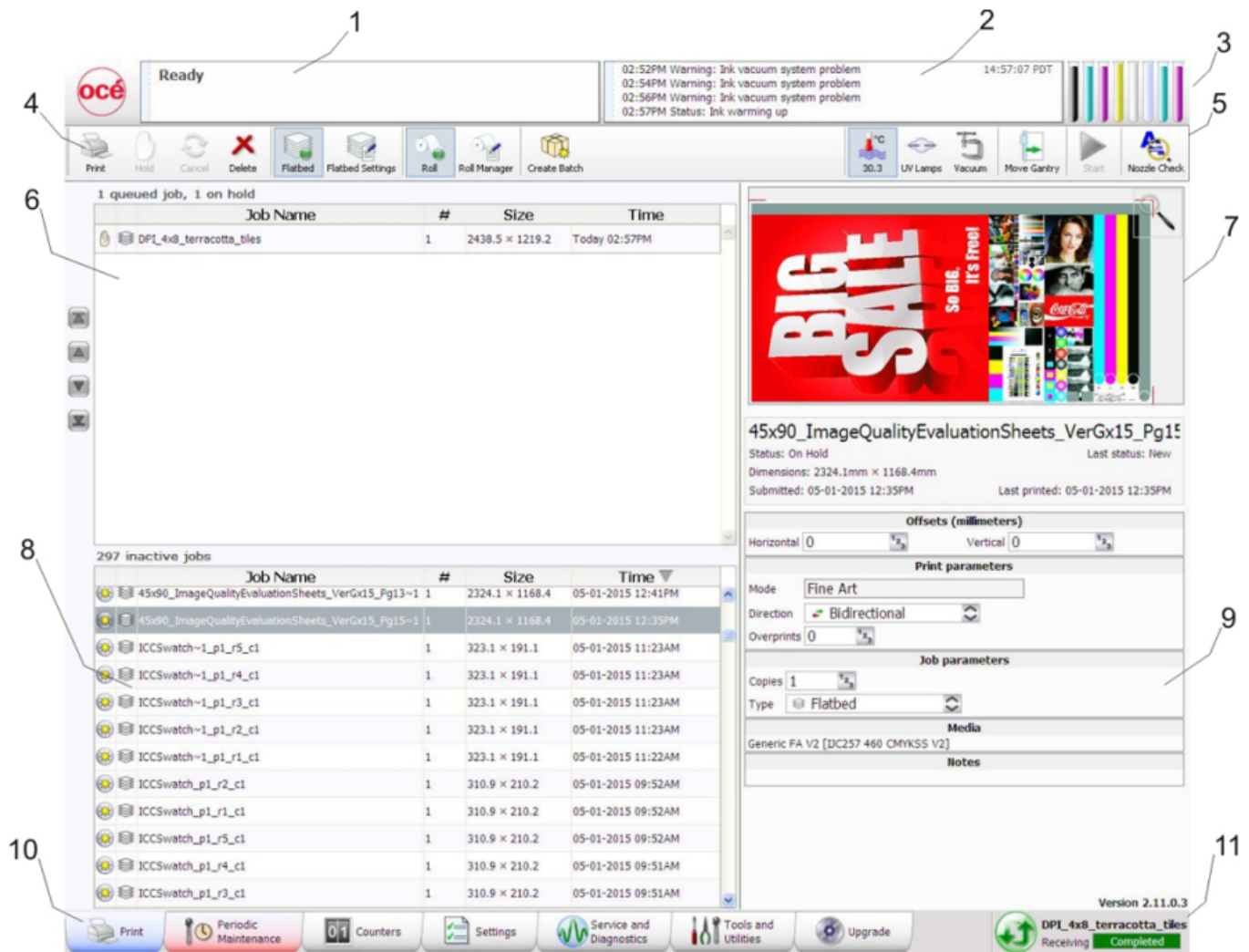


Operating Panel - General Usage

Viewing Jobs

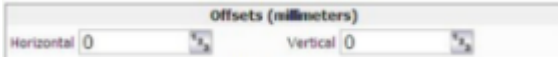
When selecting a job in Active Jobs List (6) or Inactive jobs (8) it will display the artwork in the job Placement Preview (7)



Viewing Print Layers

Position Jobs

To position a job- use the offsets panel on the right-hand side under the preview.



Starting from the bottom left of the artwork you can select the horizontal and vertical offset. This is based on setting a board on the bed at 0x0mm based on the ruler position printed on the bed.

Tip: Print your job closest to the print head in case of print issues you can save the rest of the board

Creating Batch Jobs

Sequential

Collated

Printing a Nozzle Check

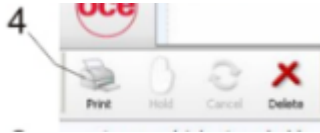
Select Nozzle Check at the top right of the page (5)



This loads the pattern to print a nozzle check. Select if you'd like to print on the roll or on the bed (9) and then hit print.

Pausing Jobs

Select Hold to pause a job. (4)



Cancelling Jobs

Select Cancel (4)

Deleting Jobs

Select Delete (4)

Revision #7

Created 3 October 2022 14:50:12 by Matt Parris

Updated 4 October 2022 16:55:55 by Matt Parris