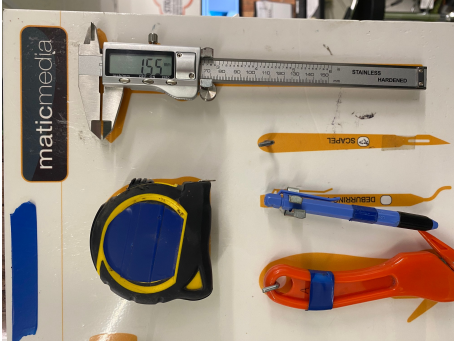


# Measuring the Head Height

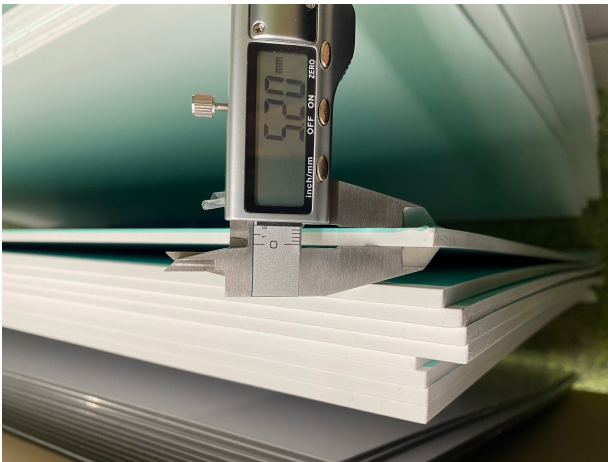
To measure the thickness of the material choose the guage from the shadow board.



Take it to the material, and press **ON**.

Twist the cog on top to loosen the gauge slider.

Fit the material into the gauge and the screen will display the thickness in millimetres.



Once you select to print a job, the pop-up screen will appear with the option to input your head height.

Depending on the material, the normal height should be 0.5mm higher than the thickness of the material.

The higher the head the print will have a lower quality of print finish.